

MODERATE  
WALTZ TEMPO

# BALTIMORE Rowhouse

Roger  
ALDRIDGE ①

**INTRO** RHYTHM SECTION:

C m57 F m57 C m57 Bb m57

C m57 F m57 C m57 Dm9 Db9 IN TEMPO

LEAD:

1) TEMPO I C m57 Cm9 B9 Bbm9 RIT... A9 (#11)

Ab m57 Abm9 G9 C m57 Dm9 G7(b9)

2) C m57 Cm9 B9 Bbm9 A9 (#11)

Ab m57 Abm9 G9 C m57 Dm9 G7(b9)

3) Am57 Abm9 Dbm9 Gb7(b9) Dm9 G7(b9)

4) C m57 Cm9 B9 Bbm9 A9 (#11)

Ab m57 Abm9 G9 5) C m57 F m57

6) RHYTHM SECTION: MED ROCK 4/4 DRAIN BREAK 2 BARS

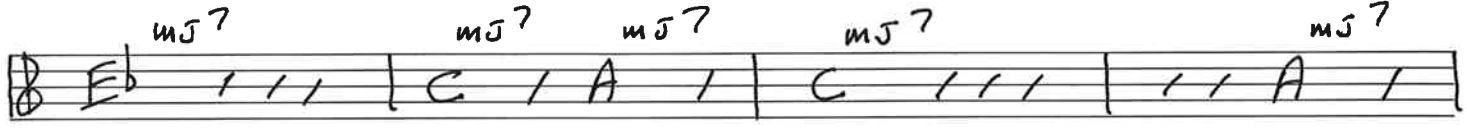
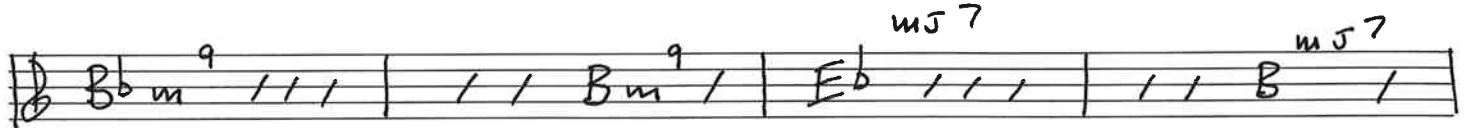
7) ROCK SOLO(S) AND IMPROVISED BACKGROUNDS. REPEAT AS DESIRED.

Abm9 / / / Em9 / Abm9 / / / Em9 /

COPYRIGHT © 2010 Roger Aldridge (BMI)  
ALL RIGHTS RESERVED

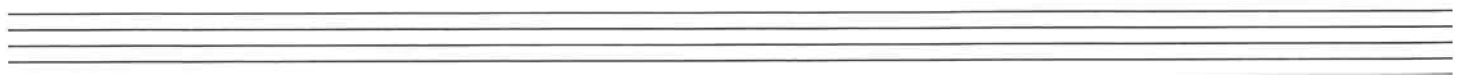
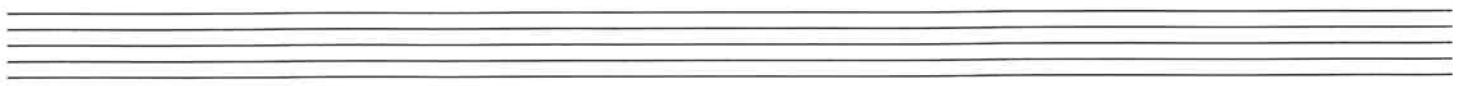
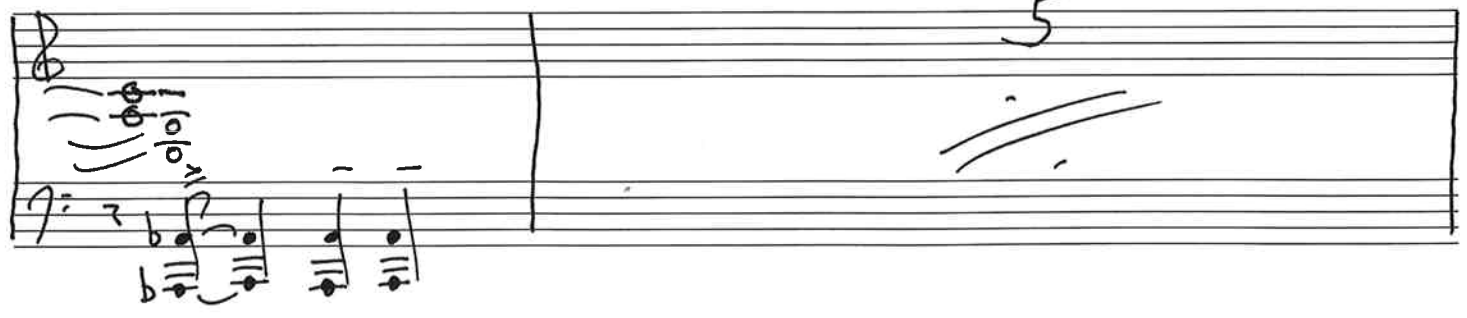
BALTIMORE Rowhouse

(2)



S ON CLUE

$F m^7$   $E m^7$   $C\# m^7$   $D m^7$   $D\flat m^7$   $A m^7$   
 $A\flat$   $A\flat$   $A\flat$   $A\flat$   $A\flat$   $A\flat$



# BALTIMORE Rowhouse

3

Handwritten musical notation for the first system, including guitar chords and bass lines. Chords:  $\frac{E m57}{Ab}$ ,  $\frac{E m57}{Ab}$ ,  $\frac{C m57}{Ab}$ ,  $\frac{D m57}{Ab}$ ,  $\frac{D m57}{Ab}$ ,  $\frac{A m57}{Ab}$ . Dynamics: **FF**.

Handwritten musical notation for the second system, including guitar chords and bass lines. Chords:  $\frac{E m57}{Ab}$ ,  $\frac{E m57}{Ab}$ ,  $\frac{C m57}{Ab}$ ,  $\frac{D m57}{Ab}$ . Dynamics: **FF**.

Handwritten musical notation for the third system, including guitar chords and bass lines. Chords:  $\frac{D b m57}{Ab}$ ,  $\frac{A m57}{Ab}$ . A circled number '9' is present. Dynamics: **FF**.

Free Time UNACCOMPANIED SOLO

Handwritten musical notation for the fourth system, including guitar chords and bass lines. Chords:  $\frac{A m57}{Ab}$ ,  $\frac{B m57}{Ab}$ ,  $\frac{D m57}{Ab}$ ,  $\frac{D m57}{Ab}$ . Dynamics: **MP**. Includes instructions: **END**, **Tempo I**, **MP**, **ON cue**, **REPEAT UNTIL cue**, **Soloist plays over vamp**, **END SOLO**. RIT. LAST TIME